



INFINITY RUG INSTALLATION

TECHNICAL BULLETIN # R-4.0

11/11

NOTE: This publication is intended for use with Infinity Rug program.

ATTENTION: Before you start, read this bulletin and other applicable literature pertaining to the installation of Masland carpet. **Any topics not specifically covered in this bulletin should be directed to Masland's Technical Services Center at: 1-800-633-0468.**

BEFORE STARTING INSPECT FOR: Concealed damage, manufacturing defects and shipping errors.

WARRANTIES: Masland Contract specifically excludes claims involving carpet which has been cut and installed with visible manufacturing defects.

NOTE: Should other trades perform work in areas where Masland carpet has been installed, the installer and / or general contractor assumes total liability for damage and deterioration, including wear, compaction, soiling, staining, abrasion, and stretching. Failure to provide adequate protection until occupancy may void all Masland Contract Warranties.

TOLERANCES: Masland products are manufactured to rigid quality standards. Because of the unique applications found with custom area rugs; Masland can allow a cutting tolerance for inset rugs and wall-to-wall installations. Consideration of any special requirements regarding cutting tolerances will be necessary during the planning of your project.

CARPET CONDITIONING: A least 24 hours prior to installation, lay out carpet on the job site and smooth out any wrinkles. Conditioning allows the carpet to relax and become more pliable for stretching and aligning pattern match.

JOB SITE CONDITIONS

TEMPERATURE: Minimum 65 F, 48 to 72 hours Prior to, during and after installation.

LIGHTING: Operative to level of occupancy.

SUBFLOOR: Sound, and free of grease, oil, paint, or any foreign substance that may inhibit the adhesive bond.

pH: If pH readings exceed 9.0, contact the General contractor to correct the condition.

AMBIENT RELATIVE HUMIDITY: Between 12% and 65% for 24 hours prior to installation.

CONCRETE: Cured for 90 to 120 days, must be sealed.

RELATIVE HUMIDITY IN SUB-STRATE: Determined by the ASTM-F-2170-09 Relative Humidity in situ Probe Test should not exceed 85%.

PATCH: Cracks larger than 1/8" must be filled with an approved latex or cementitious compound. These are: Armstrong S-180, Ardex Feather Finish, Mapei Plani Patch, Lev-L-Lastic and Dependable.

MOISTURE: Concrete sub floors must be tested for moisture emissions prior to installing Masland carpet. Moisture emission levels should be determined by the Calcium Chloride Moisture test method ASTM-F-1869-04. If emission rate exceeds 5lb/24 hr/1000 sq ft, corrective measures must be taken.

LAYOUT

AREA SQUARENESS: Check the installation area for squareness and strike a chalk line perpendicular to an outside wall or adjoining hard surface across the area to be installed. A laser square also works well. Align the rug to these lines as they will help you keep the patterns aligned and square across the area.

DIRECT GLUE

SEAMS: While Infinity rugs can be made in large format and rarely will require a seam to be made on site, there may be an occasion where a seam may be required in the field. A comprehensive seaming diagram must be pre planned and approved on by the purchasing parties prior to installation. NOTE: The seams should run lengthwise in major areas, parallel to traffic paths, into natural and artificial light sources, and be avoided at major pivot points when possible.

SEAMING: Masland does not guarantee invisible seams; however, excellent seaming is achievable when following these procedures. It is important to note, that due to the unique method in which Infinity Rugs are manufactured, row cutting seams are not possible. In addition, TOP CUTTING IS NOT RECOMMENDED.

1.) Masland recommends inserting pattern locators from the carpet face through to the backing. Straight hand sewing needles, fine pointed finishing nails, or ice picks are all very good for marking the patterns.

2.) Find a distinct pattern reference point on the face of the pattern and insert the needle through the secondary backing. Repeat this procedure about every 3ft (depending on pattern size) using the same reference point on the pattern down the entire length of the intended seam.

3.) Flip the carpet over and place a straight edge next to the protruding pattern locators. Ensure the straight edge is properly aligned and cut the carpet from the back. Be careful to cut just deep enough to penetrate the primary backing and avoid cutting the face fibers. Trim to a clean finish with sharp carpet shears.

4.) Repeat these cutting procedures on the adjoining breadth making sure you use the same pattern reference points. Many products have very similar pattern markings that may not necessarily be the exact same reference point.

5.) Cross seams need to be prepared using the same above pattern locator techniques.

Lay carpet into the “wet” adhesive so that the carpet may slide in the adhesive to obtain pattern match.

Using dry lines and stay nails, (suitable for the flooring type, wood or concrete) match pattern at the midpoint of the seam so that elongations can be corrected to each wall. In most situations this will yield acceptable results.

Using a two head power stretcher or a “**dead man**”, stretch the shorter patterns to match the longer ones. Use **stay nails** to hold the stretched side on pattern and use a knee kicker, or preferably a double-headed mini-stretcher, to close gaps or push any fullness toward the center of the carpet. Leave stay nails in place until adhesive has reached adequate strength.

When installed as an inset, it is important to seal all edges that adjoin to a hard surface as well by applying a 1/8” bead of Masland 1810 sealer along the edge of the hard surface.

Seam Sealer: Masland 1810 seam sealer.

ADHESIVE: Masland 2950; Trowel: 1/8” x 1/8” x 1/8” U notch 10 yards/gallon

ROLLING: To ensure adequate adhesive transfer, carpet with secondary backing should be pressed into the adhesive bed by using 75# roller. Roll in both directions, but do not over roll.

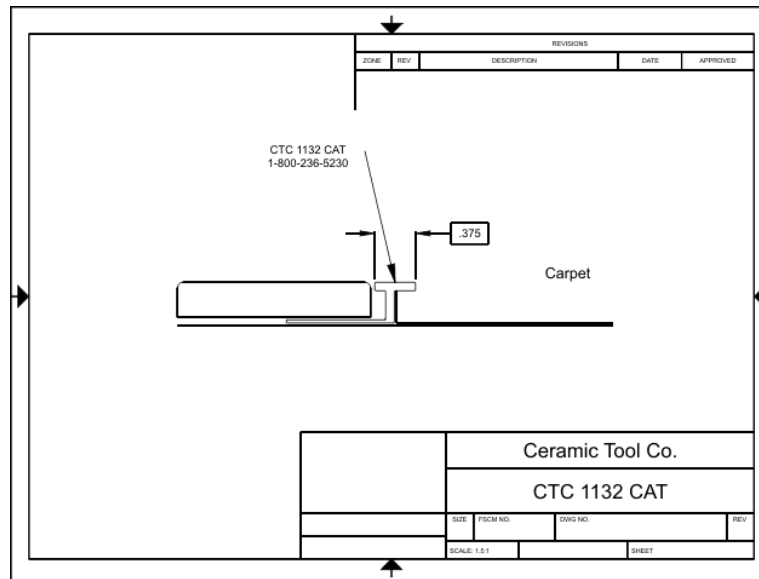
For specific questions or installation instructions not addressed in this bulletin contact Masland Technical Services: 1-800-633-0468

ATTENTION

WHEN INFINITY RUGS ARE BEING USED AS AN INSET INTO HARDSURFACE THE FOLLOWING INFORMATION MUST BE CONSIDERED. FAILURE TO COMPLY WITH THE RECOMMENDATIONS LISTED BELOW MAY VOID ALL MASLAND WARRANTIES.

The average thickness of an Infinity rug is ½” thick. This is important to know when using a 4.0 rug as an inset into hard surface. Masland requires that when a 4.0 rug is being used in this manner, that it be finished level to or slightly lower than the adjoining hard surface and that a 1/8th inch bead of Masland 1810 seam sealer be applied next to the hard surface. This will help to prevent the edges from raveling and being damaged from floor maintenance associated with the cleaning of the adjacent hard surface. The adjoining hard surface thickness must be considered when planning for this application. This is especially true when installing an Infinity rug as a double glue over cushion.

When possible, and when the hard surface is being installed, the appropriate edge protection should also be considered as an added safeguard. Manufacturers such as Ceramic Tool Company and Schluter have a variety of different profiles that should be sufficient for most applications. An *example* of a proper profile is shown below.



Ceramic Tool Company Phone: 1-800-236-5230 <http://www.ceramictool.com/index.html>

For specific questions or installation instructions not addressed in this bulletin contact Masland Technical Services: 1-800-633-0468